

MONTHLY MEMBERSHIP PROGRESS REPORT

District 11 D2

Results as of: 5/31/2024

GMT:

LOCATION MICHIGAN

GMT CA

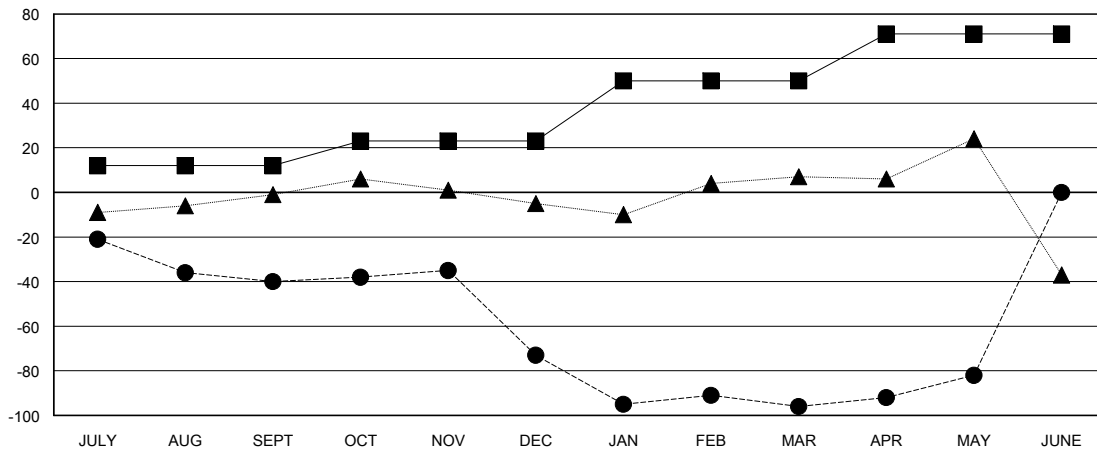
Clubs			
RESULTS FOR 2023-2024			
QUARTER	NEW CLUB GOAL	NEW CLUBS	DROPPED CLUBS
JULY/AUG/SEPT	0	0	0
OCT/NOV/DEC	1	0	2
JAN/FEB/MAR	0	0	0
APR/MAY/JUNE	0	0	0

Members			
RESULTS FOR 2023-2024			
QUARTER	MEMBER GROWTH NET GOAL	MEMBER GROWTH ACTUAL	DROPPED MEMBERS ACTUAL (including transfers)
JULY/AUG/SEPT	12	27	60
OCT/NOV/DEC	11	37	63
JAN/FEB/MAR	27	28	36
APR/MAY/JUNE	21	21	6

GOALS AND ACTUAL NEW CLUBS CUMULATIVE



GOALS AND ACTUAL MEMBERS CUMULATIVE



DROPPED CLUBS: 2	24 CLUBS OF 46 ADDED 1 OR MORE NEW MEMBERS	GENDER DISTRIBUTION MALE 866 (70.64%) FEMALE 359 (29.28%)
DROPPED MEMBERS DECEASED 16 CLUB CANCELLED 38 OTHER 111 TOTAL 165	CLICK HERE FOR CUMULATIVE MEMBERSHIP DATA	TOTAL FAMILY UNIT MEMBERS 177 FAMILY MEMBERS PAYING HALF DUES 91